

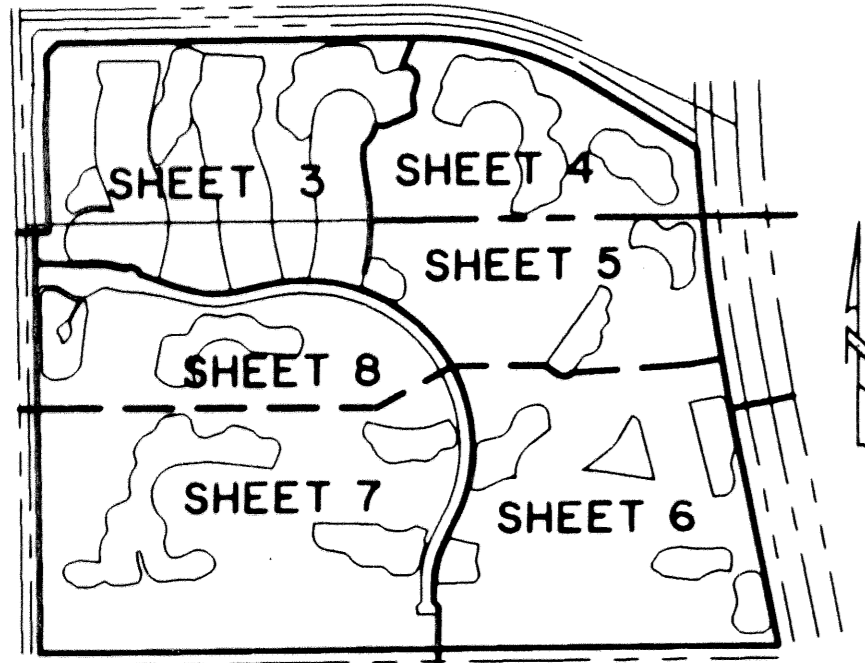
# DELRAY TRAINING CENTER-PLAT ONE

0664-001

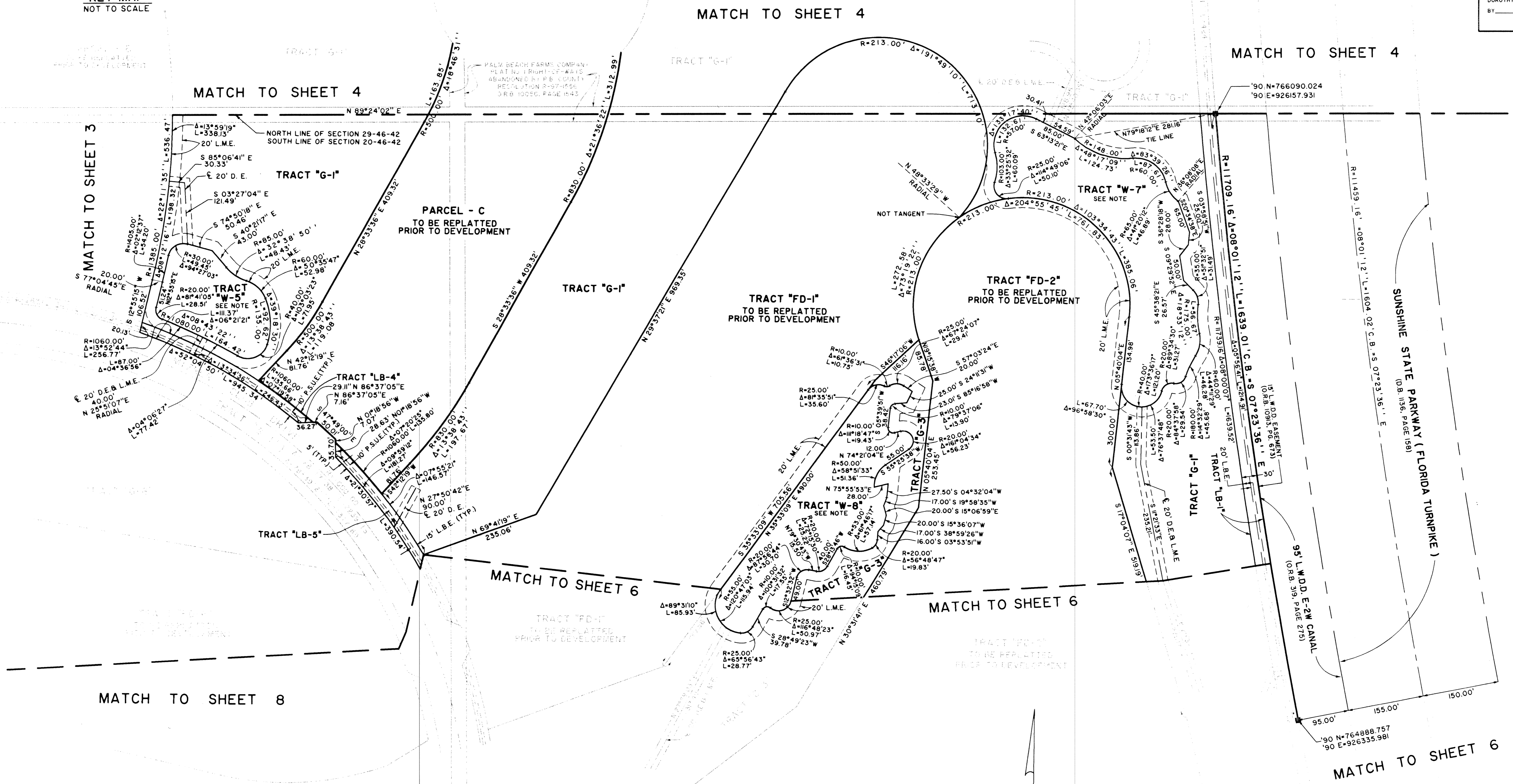
64

A PLANNED UNIT DEVELOPMENT  
 BEING A REPLAT OF TRACTS 114 THROUGH 123, AND PORTIONS OF TRACTS 101-113, 124 & 125 OF  
 SECTION 20, AND TRACTS 5 - 15, 18 - 28, 37 - 47, 50 - 61, & PORTIONS OF TRACTS 4, 16, 17, 29,  
 35, 36, 48, 49, & 62, OF SECTION 29, ACCORDING TO PALM BEACH FARMS CO. PLAT No. 1,  
 AS RECORDED IN PLAT BOOK 2, PAGES 26 THROUGH 28, INCLUSIVE, PUBLIC RECORDS OF  
 PALM BEACH COUNTY, FLORIDA; LYING IN SECTIONS 20 AND 29, TOWNSHIP 46 SOUTH,  
 RANGE 42 EAST, PALM BEACH COUNTY, FLORIDA.  
 MAY, 1999

STATE OF FLORIDA  
 COUNTY OF PALM BEACH  
 THIS PLAT WAS FILED FOR RECORD AT \_\_\_\_\_  
 M. THIS DAY OF \_\_\_\_\_ 19\_\_\_\_  
 AND DULY RECORDED IN PLAT BOOK NO. \_\_\_\_\_  
 ON PAGE \_\_\_\_\_  
 DOROTHY H. WILKEN, CLERK OF THE CIRCUIT COURT  
 BY \_\_\_\_\_ D.C.



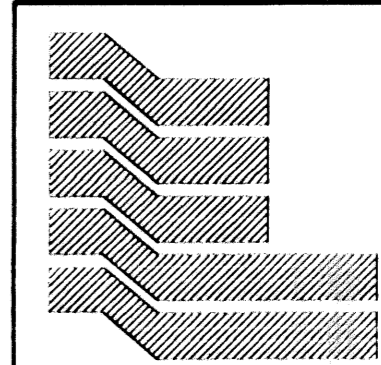
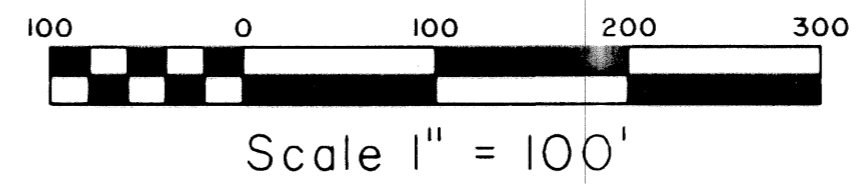
KEY MAP  
 NOT TO SCALE



DELRAY TRAINING CENTER  
 PLAT 64  
 FLOOR MAP # 215A  
 ZONING PUD  
 ZIP CODE 33494  
 TAZ 760760  
 PUD NAME Delray Training Center

NOTE: WATER MANAGEMENT TRACTS "W-1" THRU "W-20" TO BE MAINTAINED BY THE MIZNER COUNTRY CLUB MASTER ASSOCIATION, INC., SUBJECT TO EXISTING LITTORAL ZONE RESTRICTIVE COVENANT AGREEMENT AS RECORDED IN O.R.B. 10619, PG. 1666, PUBLIC RECORDS OF PALM BEACH COUNTY, FLORIDA.

COORDINATE NOTE:  
 STATE PLANE COORDINATES SHOWN ARE GRID DATUM, NAD 83 1990  
 ADJUSTMENT, FLORIDA EAST ZONE, COORDINATE SYSTEM 1983 STATE  
 PLANE, TRANSVERSE MERCATOR PROJECTION  
 LINEAR UNIT = US SURVEY FEET  
 ALL DISTANCES ARE GROUND  
 SCALE FACTOR = 1.000020427035  
 GROUND DISTANCE X SCALE FACTOR = GRID DISTANCE  
 BEARINGS AS SHOWN HEREON ARE GRID DATUM, NAD 83 1990  
 ADJUSTMENT, FLORIDA EAST ZONE.



Landmark Surveying & Mapping Inc.  
 1850 Forest Hill Boulevard  
 Ph. (561) 433-5405 Suite 100 W.P.B. Florida

DELRAY TRAINING CENTER-PLAT ONE